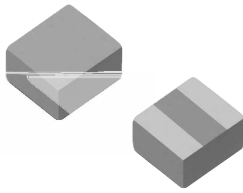


SPM Series
SMT Power Metal Inductor
Size 2510



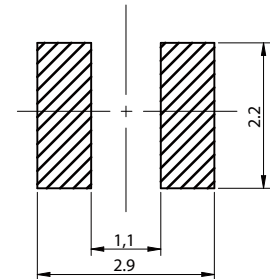
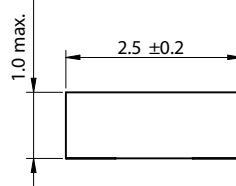
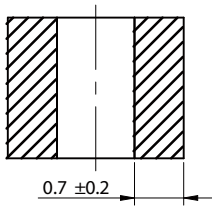
CHARACTERISTICS

-
-
-
-
-

°C ~125°C

Dimensions: [mm]

Land Pattern: [mm]



Electrical Properties:

Part No	Inductance	Tolerance	Temperature Rise Current Max.	Current Max.	DCR Max.	DCR Typ.
		±				29
		±				
		±				
		±			69	
		±			75	
		±				92
		±				
		±				
		±				
		±				
		±				

C

Typical Electrical Characteristics:

